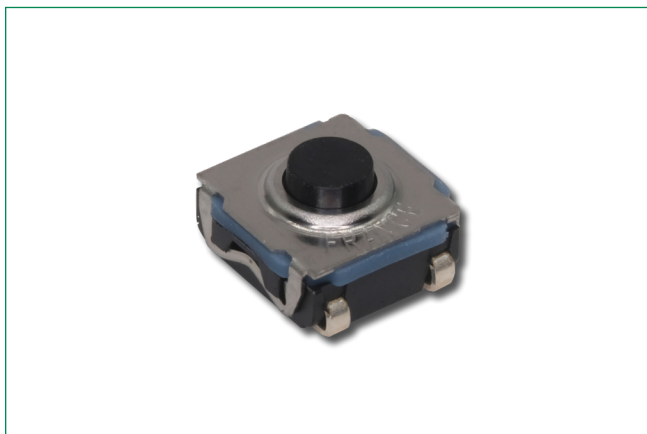


# KSC11 Series

Sealed Tactile Switch for SMT 6.2 x 6.2 mm,  
with 3.9 mm Height Hard Actuator



## Specifications

Function	Normally Open
Contact Type	SPST NO
Terminals	J bend for SMT
Contact Material	Silver plated

## Electrical Characteristics

Maximum Power	1 VA
Min. / Max. Voltage	0.02V - 32V
Min. / Max. Current	1 - 50 mA
Dielectric Strength	250 Vrms
Contact Resistance	$\leq 100 \text{ m}\Omega$
Insulation Resistance	(100 V): 1000 M $\Omega$
Bounce Time	$\leq 5 \text{ ms}$

## Environmental Characteristics

Operating Temperature	-40°C to 85°C
-----------------------	---------------

## Process

Soldering	This component is suited to the following methods: Cleaning according to typical washing processes Lead free reflow soldering process in accordance with IEC 61760-1
Packaging	In reels of 1,700 pieces Width of carrier tape: 16 mm Dimensions of reels: 380 mm

## Description

The KSC11 series of sealed tactile switches for SMT are IP67 rated, 3.9 mm high momentary action tactile switches, featuring a hard actuator. The switches are available with a variety of operating forces depending on the model. The KSC11 series are designed to give users a positive tactile feeling, and due to the high tactile ratio and long lifetime of up to 3,000,000 cycles are ideal for avionics / industrial consoles, gaming, drones, or any other demanding applications.

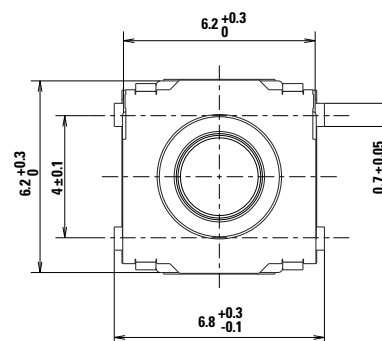
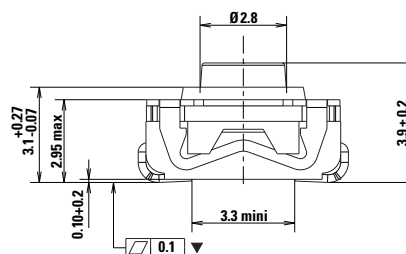
## Features & Benefits

- Hard actuator
- Long life
- Positive tactile feeling
- IP67 sealed
- SMT
- Compatible with lead free reflow soldering process of SMT devices
- Low halogen, RoHS and REACH compliant

## Applications

- Gaming/ Drones
- Industrial
- Medical
- High-end consumer
- Avionics

## Dimensions (in mm)



# KSC11 Series

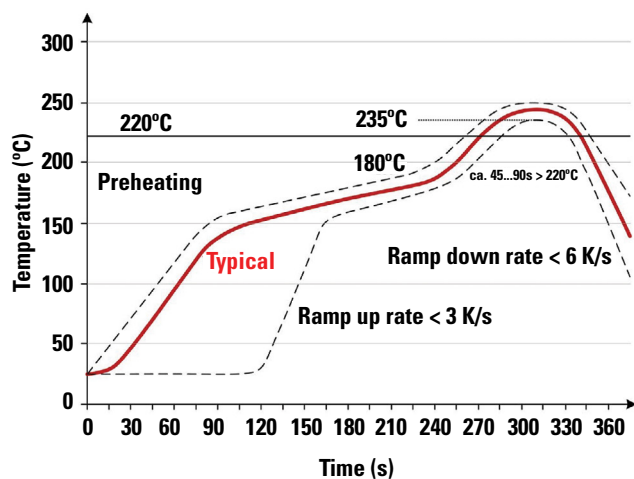
Sealed Tactile Switch for SMT 6.2 x 6.2 mm,  
with 3.9 mm Height Hard Actuator



## Mechanical Characteristics

Part #	Operating Force FA (Newtons)	Operating Life (operations)	Travel (mm)
KSC1101J LFS	1.60 ± 0.4	3,000,000	0.20 ± 0.1
KSC1131J LFS	3.20 ± 0.6	2,000,000	0.25 ± 0.15
KSC1151J LFS	5.00 ± 1.0	1,000,000	0.40 ± 0.15

## Soldering Profile

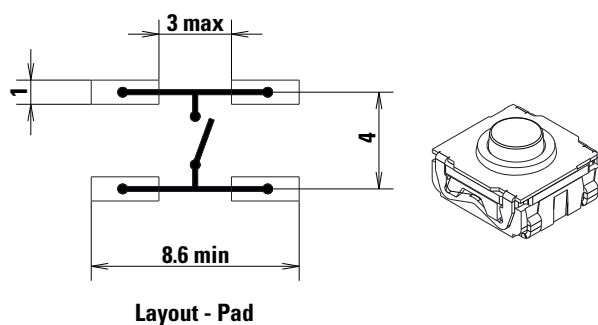


**Note:** Up to 2 reflow cycles in accordance with the above temperature profile

Soldering process: Depending on the application, this component is suited to the following methods:

- Terminals being silver or gold plated over a nickel barrier, the use of slightly activated flux is suitable.
- Lead free soldering process in accordance with the definition on the left.

## Terminations (mm)



Layout - Pad

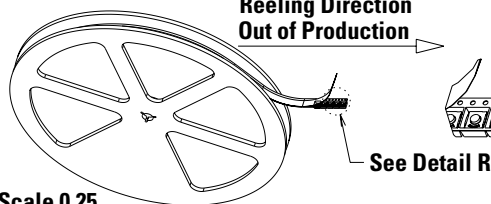
# KSC11 Series

Sealed Tactile Switch for SMT 6.2 x 6.2 mm,  
with 3.9 mm Height Hard Actuator



## Tape & Reel

Reeling Direction  
Out of Production



Detail R  
Scale 1

Scale 0.25

## Packaging Details

Type	Tape & reel
Number of Parts in Packaging	2,000
Other Information	Tape and reel per EIA 481
Transport Conditions	According to specification NF H00-060

## Ordering Number

Our easy build-a-switch concept allows you to mix and match options to create the switch you need. To order, select desired option from each category and place it in the appropriate box. For any part number different from those listed above, please consult your local representative.

### KSC11 - xx - J - LFS

Operating Force

01: 1.6 N

31: 3.2 N

51: 5.0 N

Termination

J: J bend

LFS: Lead free compatible,  
silver plated

## Liability Limitation

This datasheet does not provide enough information for applications that require a certain level of quality or safety such as automotive, medical systems, or safety equipment. Please contact customer service for the contractual specification package.

**Disclaimer Notice** - Information furnished is believed to be accurate and reliable. However, users should independently evaluate the suitability of and test each product selected for their own applications. Littelfuse products are not designed for, and may not be used in, all applications. Read complete Disclaimer Notice at <http://www.littelfuse.com/disclaimer-electronics>.