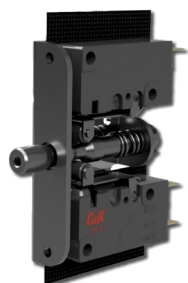


SL Series

Sealed Interlock Door Switches



Description

SL series is a sealed heavy duty interlock switch perfect for outdoors and harsh environment applications. It is offered with 0.187" quick connect terminal or potted 12 inches (304.8 mm) wire long and IP67 rated.

Features & Benefits

- IP60/IP67 rated
- From 0.1A to 10A max.
- AC or DC rating voltage
- Push (MOM)/pull motion (maintained)
- Threaded or non-threaded plunger
- SPDT or DPDT (extended SS bracket)
- Integrated wire harness solution

Applications

- Industrial food equipment
- String converters
- Test lab equipment
- Panel builders
- Industrial enclosures

Specifications

Electrical Life	10,000 cycles
Contact Rating	0.1A @ 125/250 VAC or 30VDC; 3A @ 125/250 VAC or 30VDC; 6A @ 125/250 VAC or 30VDC; 10A @ 125/250 VAC or 5A @ 30VDC
Electrical Operating Efficiency	10-30 operations/minute
Mechanical Life	1,000,000 operations
Mechanical Operating Efficiency	120 operations/minute
Insulation Resistance	(at 500 VDC/minute) 100 M ohm min.
Dielectric Strength	1,500 VAC (50-60 Hz)
Operating Temperature	40°C-85°C (with no icing)
Operating Force	200 grams

Materials

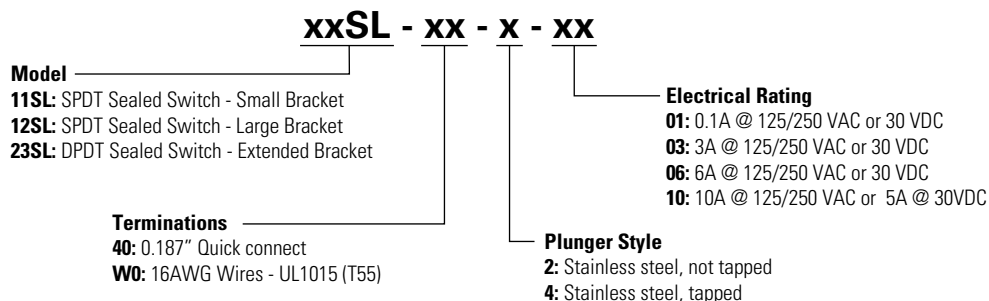
Mounting Bracket	Stainless steel
Plunger	Stainless steel
Spring	Copper alloy
Switch Materials	
Case	Nylon
Movable Contacts	Silver Alloy
Terminals	Copper alloy
Roller Lever	Stainless steel
Wire	PVC + CU

Notes:

Specifications and materials listed above are for switches with standard options. For information on specific and custom switches, consult Customer Service Center.

Ordering Number

To order, simply select desired option from each category and place in the appropriate box. For additional options not shown in catalog, consult Customer Service Center.

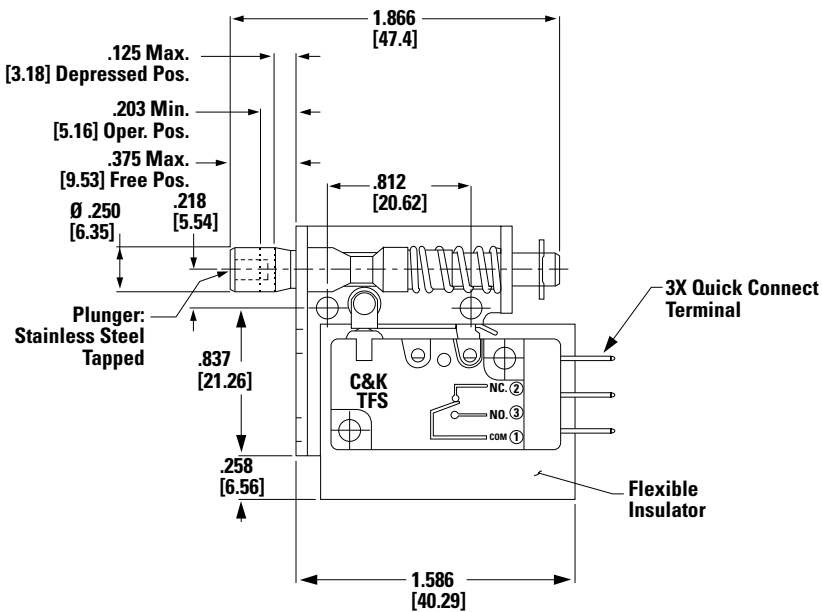
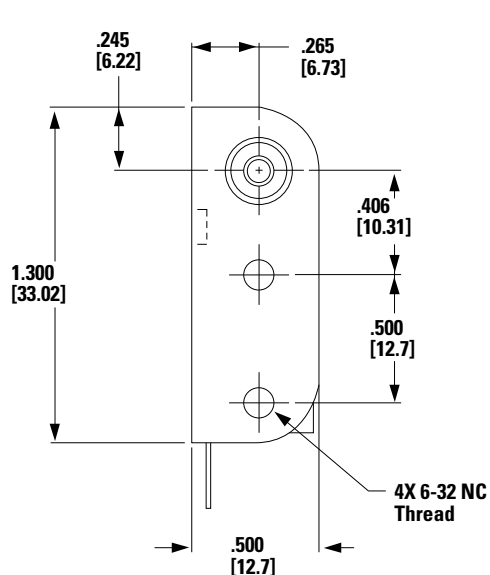


SL Series

Sealed Interlock Door Switches

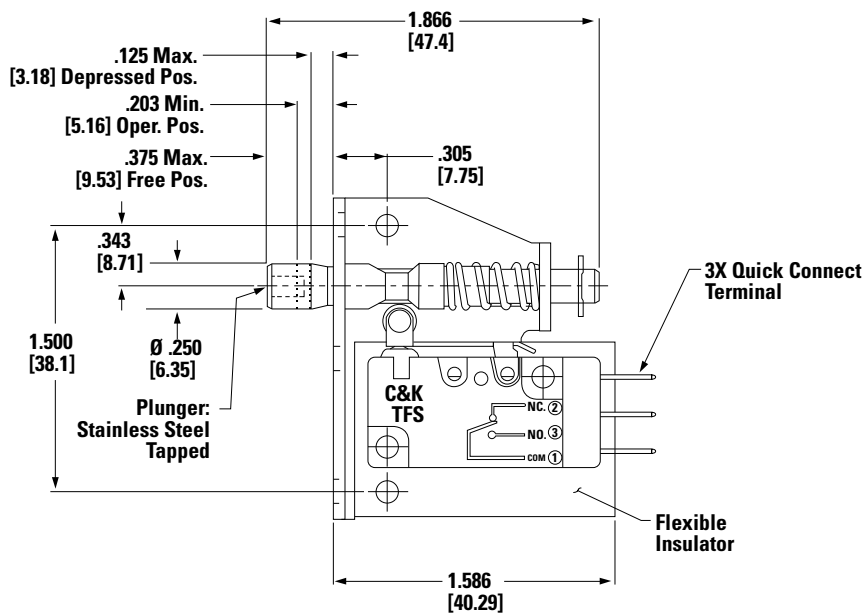
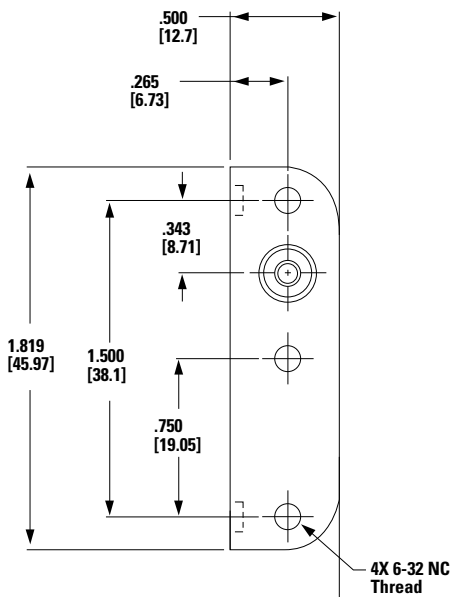


Model 11SL With Small Bracket 11SL404 SPDT

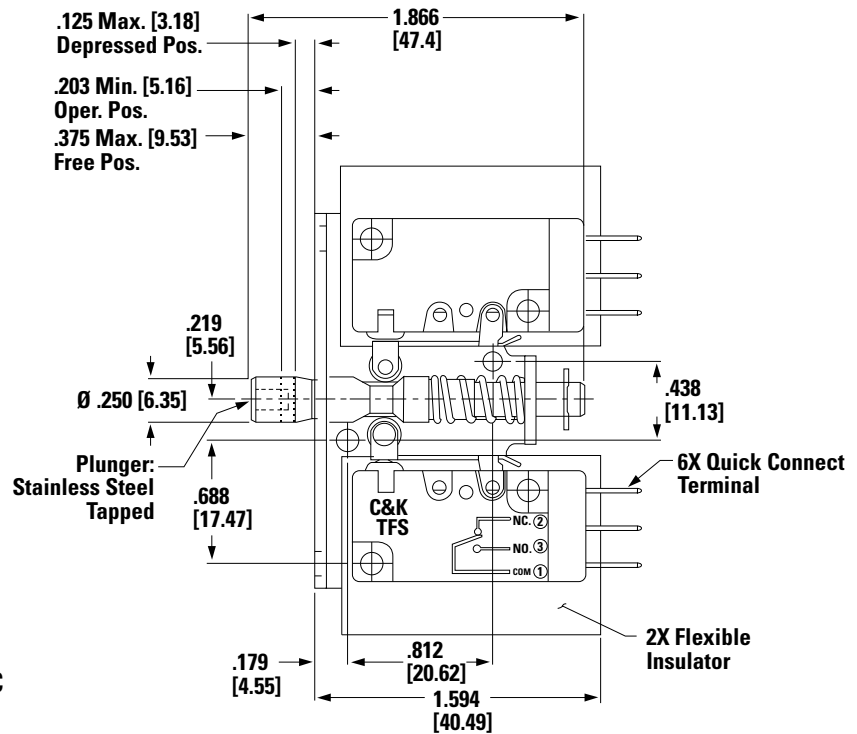
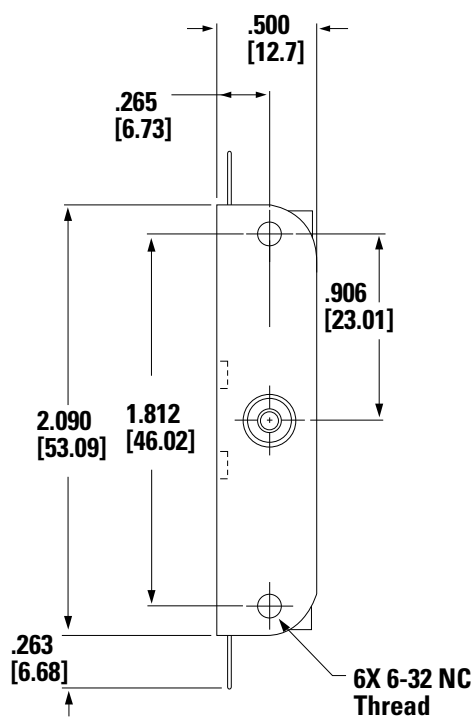


Notes:
Switch Characteristics: Operating Force lbs. Max. 8

12SL With Large Bracket 12SL404 SPDT

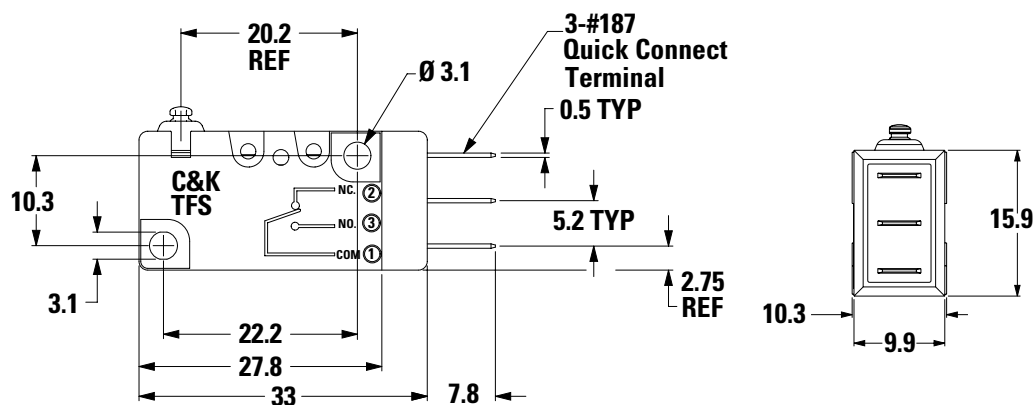


Notes:
Switch Characteristics: Operating Force lbs. Max. 8



Terminations

40 0.187" Quick Connect

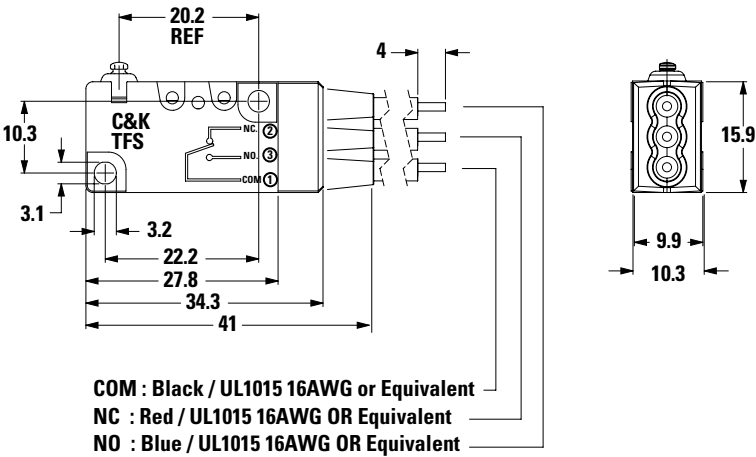


SL Series

Sealed Interlock Door Switches

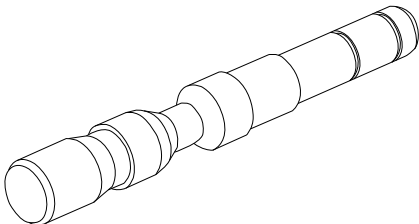


W Wire UL1015

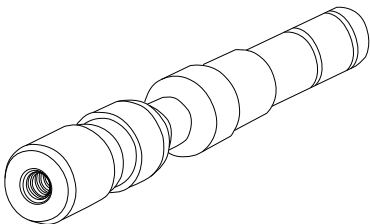


Plungers

2 Stainless Steel, Not Tapped



4 Stainless Steel, Tapped 4-40 x .375 (9.52) min. Depth



Electrical Rating

Electrical Rating Code	Amps	Contact Rating	Wire Type 16 AWG
01	0.1	0.1A @ 125/250 VAC or 30VDC	•
03	3	3A @ 125/250 VAC or 30VDC	•
06	6	6A @ 125/250 VAC or 30VDC	•
10	10	10A @ 125/250 VAC or 5A@ 30VDC	•

Disclaimer Notice - Information furnished is believed to be accurate and reliable. However, users should independently evaluate the suitability of and test each product selected for their own applications. Littelfuse products are not designed for, and may not be used in, all applications. Read complete Disclaimer Notice at <http://www.littelfuse.com/disclaimer-electronics>.