

TLSM Series

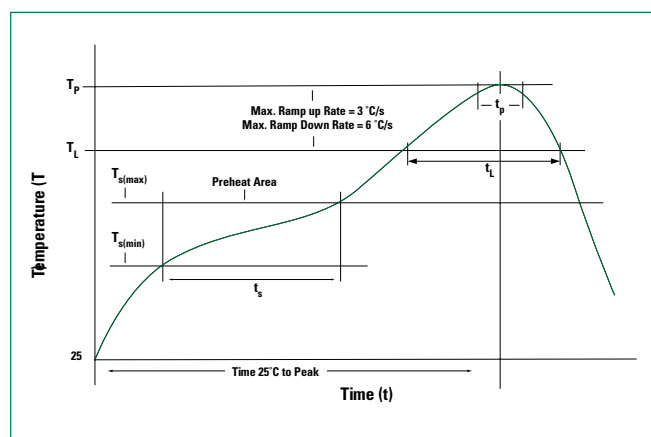
Dual Circuit Technology
Tactile Switch for SMT 6.0mm x 6.1mm



Mechanical Characteristics

Sample	Style	Force (N)	Life cycles	Travel (mm)
TLSMDT3020GLFS	Gull wing	2.0 +/- 0.5	2,000,000	0.3 ± 0.2

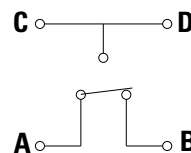
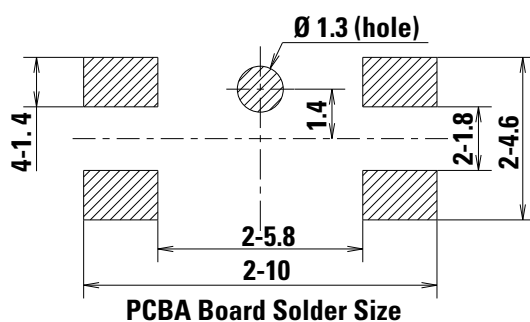
Soldering Profile



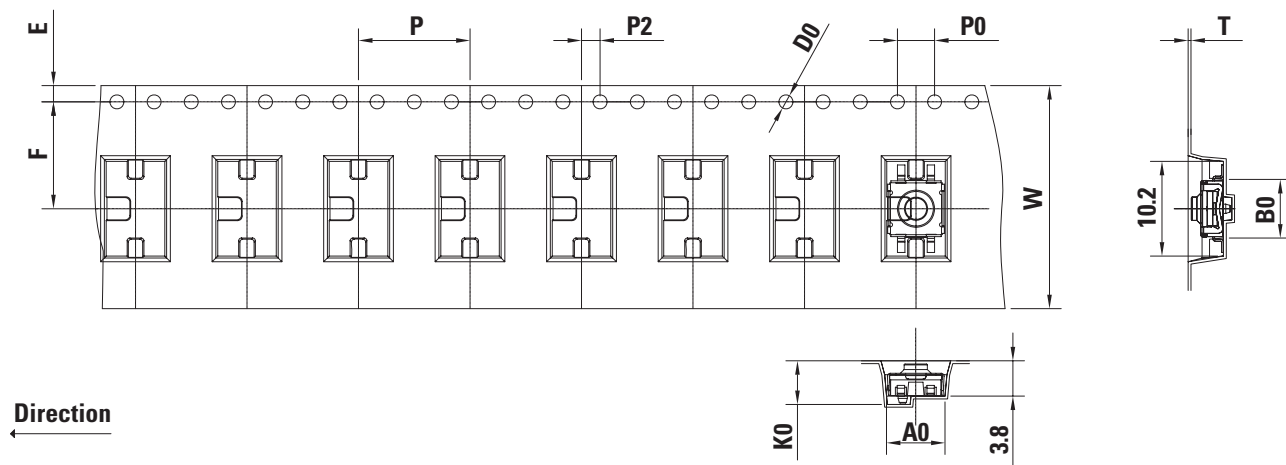
Tp	Peak package body temperature 260°C
TL	Liquidous temperature 217°C
Ts	Preheat temperature 150-200°C
ts	Preheat time 60-120s
tp	30s
tL	60-150s

Soldering: This component is suited to the following methods:
Infrared Reflow Soldering in accordance with IEC61760-1

Pad Layout Dimensions (mm)



Circuit Diagram
SPDT-NC

TLSM SeriesDual Circuit Technology
Tactile Switch for SMT 6.0mm x 6.1mm**Packaging Dimensions (mm)****Packaging**

1,100 pieces per reel

Ordering Number

Our easy build-a-switch concept allows you to mix and match options to create the switch you need. To order, select desired option from each category and place it in the appropriate box. For any part number different from those listed above, please consult your local representative.

TLSM - D - T3 - C - 020 - G - LFS

D: SPDT
Haptic/%
T3: 30%
Travel
C: 0.3 mm
Operating Force
020: 2N
LFS: Lead free compatible
Termination
G: Gull wing

Liability Limitation

This datasheet does not provide enough information for applications that require a certain level of quality or safety such as automotive, medical systems, or safety equipment. Please contact customer service for the contractual specification package.

Disclaimer Notice - Information furnished is believed to be accurate and reliable. However, users should independently evaluate the suitability of and test each product selected for their own applications. Littelfuse products are not designed for, and may not be used in, all applications. Read complete Disclaimer Notice at <http://www.littelfuse.com/disclaimer-electronics>.