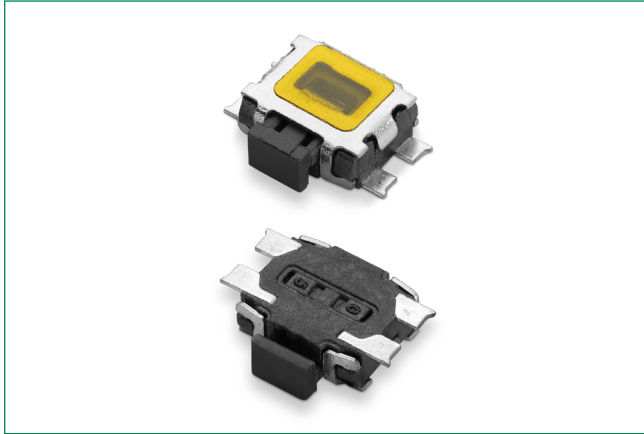


PTS841 Series

Micro Miniature Tactile Switch for SMT Side Actuated,
3.6 x 3.5 mm



Specifications

Function	Momentary action
Contact Arrangement	1 make contact = SPST NO
Terminals	G for SMT
Travel	0.2mm ± 0.1mm
Life	100,000 cycles

Electrical Characteristics

Max. Voltage	12 VDC
Max. Current DC	50 mA
Dielectric Strength	250 VA C (1 mn)
Contact Resistance	≤ 100 mΩ initial
Insulation Resistance	≥ 100 MΩ
Bounce Time	≤ 5 ms

Environmental Characteristics

Operating Temperature	-40°C to 85°C
-----------------------	---------------

Process

Soldering	This component is suited to the following methods: Infrared Reflow Soldering in accordance with IEC61760-1
Packaging	Switches in reels of 3,000 pieces Dimensions of reels according to EIA 481B. External diameter 330 mm.

Description

The PTS841 series microminiature SMT side actuated tactile switches are available with 2 different actuation forces in a small 3.6 x 3.5 form factor and reduced height of 1.25 mm. The PTS841 is ideal for small handheld and wearable devices. It also includes ground pin and peg option to reinforce the shear strength on the PCB.

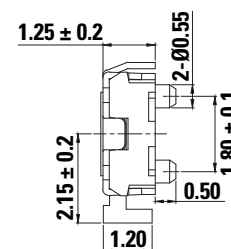
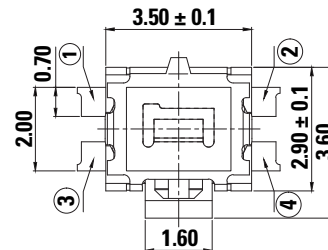
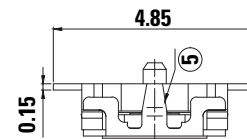
Features & Benefits

- 3.6 x 3.5 mm footprint
- 1.25 mm thickness
- ESD pin option
- Peg option
- Commercial grade

Applications

- IoT devices
- Wearables
- Portable devices
- Remote controls

Dimensions (mm)



PTS841 Series

Micro Miniature Tactile Switch for SMT Side Actuated, 3.6 x 3.5 mm



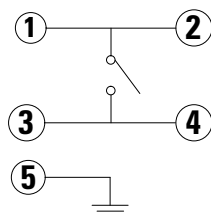
Mechanical Characteristics

Type	Operation Force (gf)	Pegs	ESD pin option
PTS841 GM SMTR LFS	180 ± 50	No	No
PTS841 GK SMTR LFS	250 ± 50		
PTS841 PM SMTR LFS	180 ± 50	Yes	No
PTS841 PK SMTR LFS	250 ± 50		
PTS841 GMP SMTR LFS	180 ± 50	No	Yes
PTS841 GKP SMTR LFS	250 ± 50		
PTS841 ESDGM SMTR LFS	180 ± 50	Yes	Yes
PTS841 ESDGK SMTR LFS	250 ± 50		

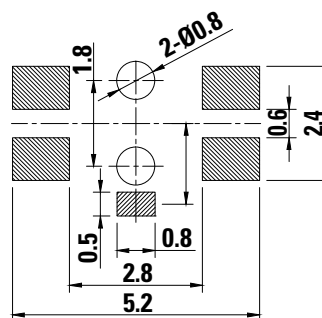
Notes:

Specifications listed above are for switches with standard options. For information on specific and custom switches, consult Customer Service Center. The PTS series is not certified for using in Automotive application and no PPAP. However, in the case of some automotive accessories and specific applications for 2 and 3 wheeled vehicles the PTS is widely used and very suitable. Please contact your local representative to discuss your application and the best switch solution.

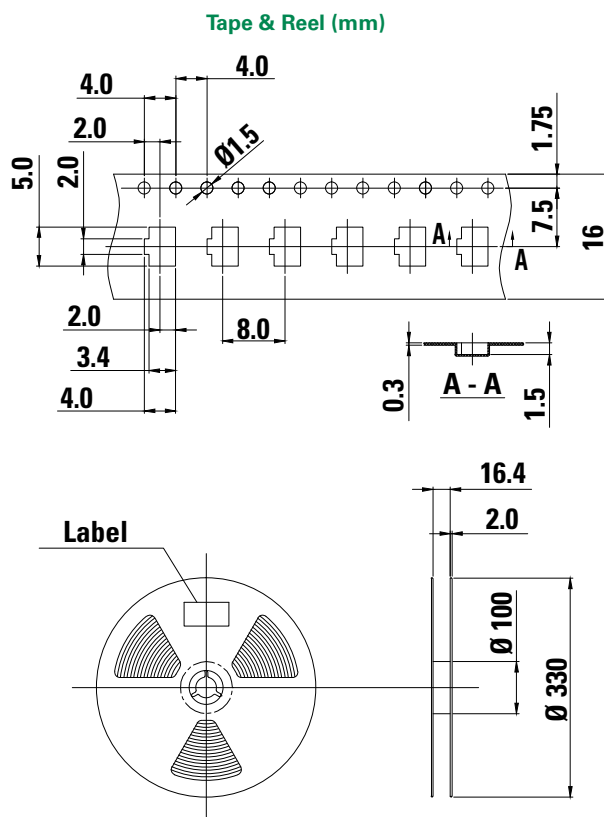
G SMT Leads with ESD and Peg options (mm)



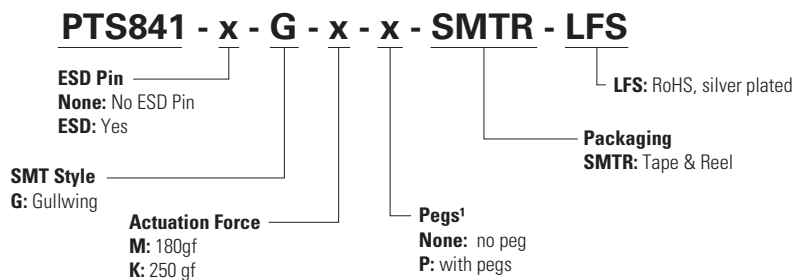
Circuit Diagram



P.C.B Land Dimension

PTS841 SeriesMicro Miniature Tactile Switch for SMT Side Actuated,
3.6 x 3.5 mm**Ordering Number**

Our easy build-a-switch concept allows you to mix and match options to create the switch you need. To order, select desired option from each category and place it in the appropriate box. For any part number different from those listed above, please consult your local representative.

**Design Recommendations:**

1. When a precise alignment between application button and the switch is requested, version with pegs are the right choice to limit the possible floating of the switch during solderability.