

PTS645V

A True SMT Right Angle Tact Switch

The PTS645V is designed to offer the ultimate compatibility with SMT automatic placement and soldering on a right angle switch in the 6.0 x 6.0 form factor.



The PTS645V switch features

- Fully compatible with standard SMT processing
- Four large SMT pads for stability during reflow and high shear resistance
- Back crimping of the insulator and specific bracket geometry to increase push force resistance
- 0.1 mm coplanarity, limits the necessary paste thickness down to 0.15 mm min



The new PTS645V switch is the choice to complete a full SMT board, eliminating additional operation of a THT component, while with advantage of providing enough resistance of solder joint strength.

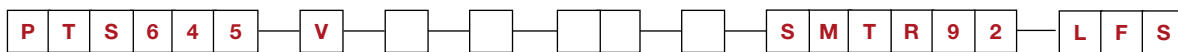
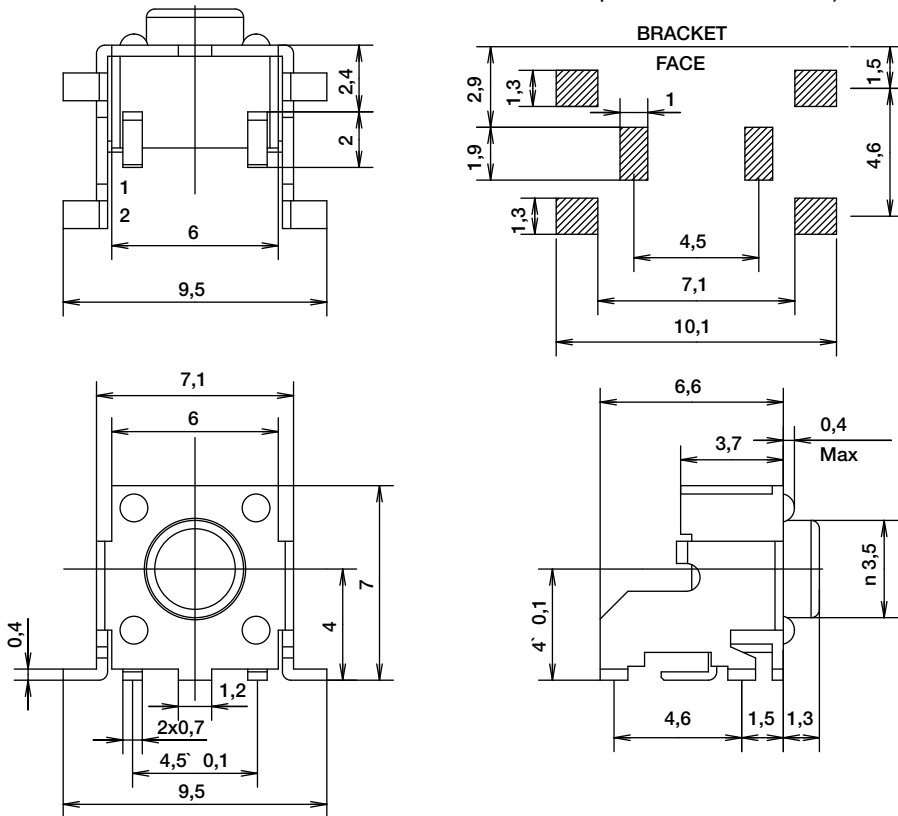
PTS645V switch offers hard actuator and soft actuator options. The soft actuator version is rated IP67 to withstand harsh environment.

PTS645V

RECOMMENDED PCB LAYOUT

(Tolerance ± 0.1)

• Solder paster thickness: 0.15 mm



Termination

V Vertical

Water Proof

NONE Non-waterproof

S Sealed version for waterproof

Actuation Force

N 100 gf

M 160 gf

K 260 gf

P 320 gf

Actuator Length

13 1.3 mm from metal front face

19 1.9 mm from metal front face

Termination

SMTR92 Surface mount, tape & reel

Peg

NONE Without peg

P With peg

RoHS compliant and compatible. Silver plated.

* Sealed version with IP67 is currently only for 1.9 mm actuator length. For other lengths, please contact your local C&K representative.